

Protocol

Matrigel™ Coating Coating of Alvetex™ Scaffold

1. Introduction

The following protocol outlines how to coat Alvetex Scaffold membranes with [Matrigel™](#) to facilitate and enhance attachment and differentiation of both normal and transformed anchorage dependent cells. Example data shown herein was obtained using this protocol to grow HepG2 hepatocytes in Alvetex Scaffold for 7 days in 6-well inserts ([AVP004](#)) in 6-well plate format.

2. Method

1. Prepare Alvetex Scaffold for coating by first treating with 70 % ethanol followed by two PBS washes as described in the relevant product information leaflet. Leave Alvetex Scaffold in the second PBS wash until ready to apply the Matrigel™ solution.
2. Dilute Matrigel™ ([BD Biosciences \(Corning\), 356234](#)); pre-thawed overnight on ice) to a concentration of 0.8 mg/mL (1 in 10 dilution) using appropriate cell culture media (e.g. MEM for the example below). Handle the reagents on ice, using pre-chilled pipette tips to perform the dilution and subsequent application onto Alvetex Scaffold.
3. Aspirate the second PBS wash from Alvetex Scaffold disc and carefully pipette 350 µL of the diluted Matrigel™ solution onto each disc. Replace plate lids and leave to stand for 1-2 hours at room temperature.
4. Remove excess fluid from Alvetex Scaffold in well insert format by gently tapping the plate or Petri dish on the worktop. Check that no residual fluid is hanging from the base of the well inserts. Aspirate to remove any residual coating agent from the bottom of the wells. If using Alvetex Scaffold in 12-well plate format, tilt the plate and gently aspirate any excess fluid from the edge of the wells.
5. Prepare cells for seeding in the appropriate culture media and seed directly on the wet Matrigel™ coated Alvetex Scaffold membrane in the volumes relevant to the Alvetex Scaffold product format. Allow the cells to settle for 30-90 minutes in an incubator (5 % CO₂, 37 °C) before flooding with media.

www.reprocell.com

For research use only. Not for use in diagnostic or therapeutic procedures. Unless otherwise noted, REPROCELL, Inc. and REPROCELL, Inc. logo, and all other trademarks are the property of REPROCELL Inc.

3. Example: growth of HepG2 hepatocyte cell line in Matrigel™ coated Alvetex Scaffold

3.1. Cell Culture details

HepG2 cells ([ATCC, HB-8065](#)) were routinely maintained in T-75 flasks. HepG2 complete media consisted of: MEM media ([Gibco \(Thermo Fisher\), 21090](#)) supplemented with 10 % v/v FBS, 2 mM L-glutamine and 100 U/mL Penicillin/ Streptomycin. Alvetex Scaffold 6-well inserts ([AVP004](#)) in 6-well plates, were coated with Matrigel™ as described above.

Cells were seeded at a density of 1×10^6 cells in 150 μ L media suspension per disc and were left to settle for 60 minutes in an incubator (5 % CO₂, 37 °C). Media was carefully added to each sample well (9 mL per well). Cultures were maintained for 7 days, with media changed on days 3 and 5.

3.2. Results

Pre-coating of Alvetex Scaffold discs with Matrigel™ resulted in enhanced infiltration of cells into the scaffold compared with control cultures in untreated Alvetex Scaffold. Cells were seen to occupy the entire depth of the scaffold after 7 days of growth in Matrigel™ coated discs, while cells grown in untreated Alvetex Scaffold occupied only the upper half of the scaffold. These findings indicate that pre-treatment of Alvetex Scaffold with extracellular matrix products is able to enhance the growth of appropriate cell types into the 3D structure.

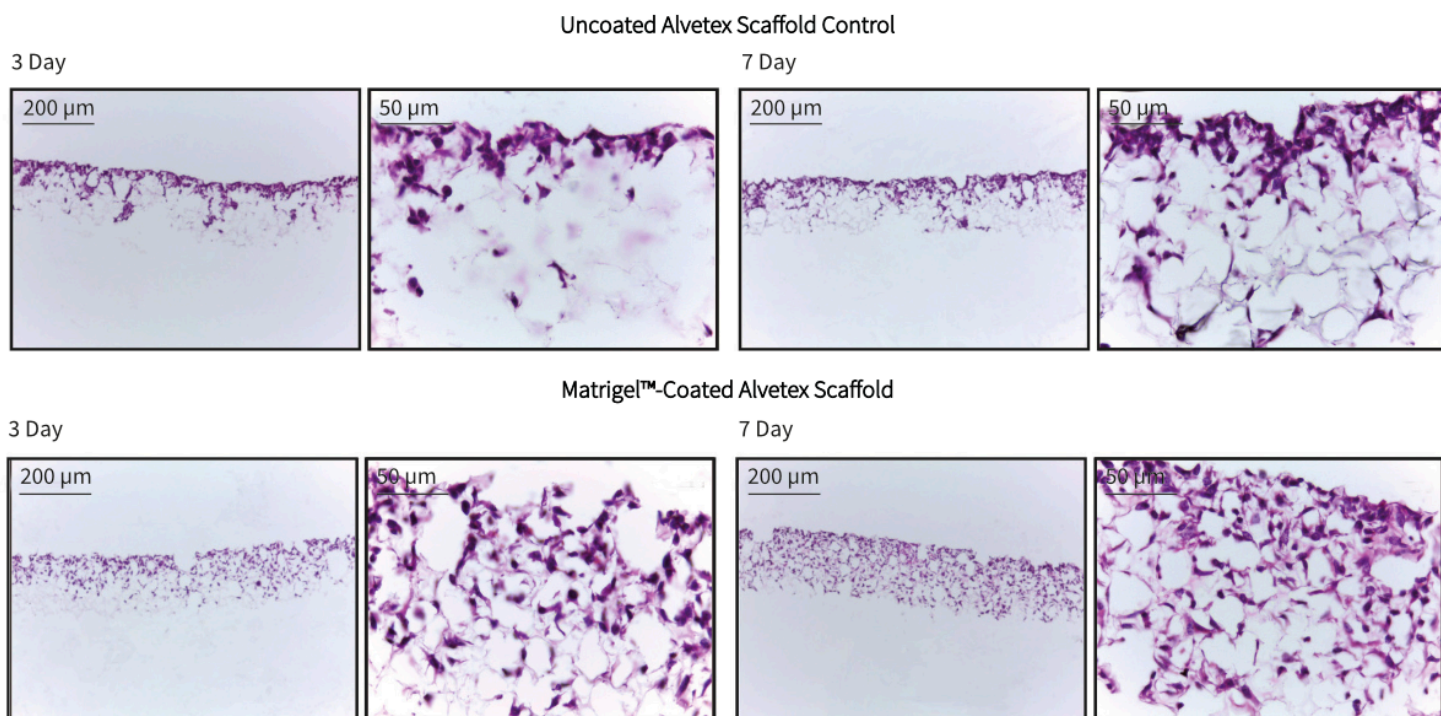


Figure 1. Brightfield micrographs at low (10 \times) and high (40 \times) magnification showing HepG2 cells cultured for up to 7 days on 22 mm diameter Alvetex Scaffold discs presented in 6-well insert (AVP004-3) in well insert holders in 6-well plate format. Cells were fixed, sectioned and counterstained with haematoxylin and eosin.