

Step up your Precision medicine initiatives with REPROCELL

Build Patient Cohorts

REPROCELL's BioServe Global Repository is the world's largest commercial human tissue bank, providing researchers with access to over 600,000 DNA, RNA, human tissue and serum samples derived from over 120,000 patients collected from four continents. BioServe human tissue samples are consistently handled according to validated protocols established by the FDA/NCI guidelines for biomarker research. All samples are fully consented for broad genomic and proteomic use and are ethically collected according to HIPAA regulations and IRB approved protocols.



BioServe Global Biorepository Blood Based Collections

Asthma
Cancer (post-treatment)
Cancer (pre-treatment)
Clinically-confirmed Normal
Controls
Congestive Heart Failure
COPD
Coronary Artery Disease

Diabetes
End-Stage Renal Disease
Hypertension
Lipid Disorder
Lupus
Metastatic Cancer
Multiple Sclerosis

Neurological Diseases
Obesity
Osteoarthritis
Osteoporosis
Psoriasis
Rheumatoid Arthritis
Stroke

BioServe Fresh Frozen and FFPE Tissue Types

Adipose
Adrenal
Aorta
Artery
Bladder
Blood
Bone
Brain
Breast
Cartilage
Cervix
Colon
Esophagus
Fallopian Tube
Gall Bladder

Intestine
Kidney
Larynx
Lip
Liver
Lung
Lymph Node
Mouth
Muscle
Nerve
Omentum
Ovary
Pancreas
Parathyroid
Parotid

Penis
Peritoneum
Pharynx
Pituitary
Prostate
Rectum
Salivary Gland
Serum
Skeletal Muscle
Skin
Small Intestine
Smooth Muscle
Soft Tissue
Spleen
Stomach

Submandibular Gland
Synovium
Testis
Thymus
Thyroid
Tongue
Tonsil
Ureter
Urethra
Uterus
Vagina
Vein
Vulva

We have it...



BioServe has one of the largest commercial human tissue banks in the world. With more than 600,000 human samples, there is a good chance that our BioRepository already has what you need.

Our network has it...



Through the BioServe Network, we are partnered with many other leading biorepositories. This expands our ability to source material and ensures that we can acquire the samples you need.

Or, we can collect it



With BioServe's orphan disease network, rare human tissue samples are finally within reach. Through our Prospective Collections, we have custom procurement partnerships with specialty clinics all around the USA.

Extract Genomic information and Discover new Biomarkers with our Molecular Biology Services

REPROCELL-BioServe offers a full range of accurate and cost-effective preclinical molecular services both as a complement to our Global BioRepository and as a stand-alone business to our customers across industry, research, and academic sectors of life sciences.

Our ISO 9001 certified molecular biology lab guarantee customer satisfaction through effective implementation of quality management system, including the continuous improvement of the system and its processes.

DNA & RNA Extraction

- Whole Blood, Blood Clots, Mouthwash, Buffy Coats, FFPE, Serum, Buccal Swabs, Tissues, Saliva, and more
- Non-organic reagents
- Column-based capabilities
- Custom-developed protocols
- Multiple Quality control practices
 - Gel check, OD 260/280, TaqMan, pico green quantitation
- Tissues, Whole Blood, PAXgene tubes

Gene Expression

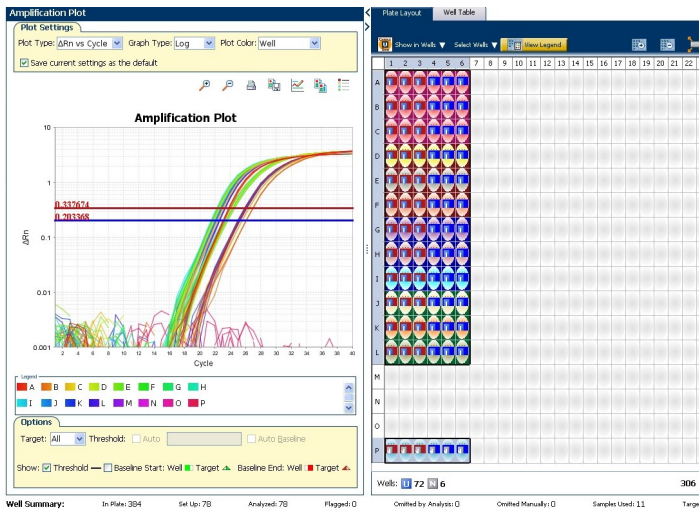
- Real-time PCR
 - Life Technologies ViiA7
- Mutation Analysis
 - Measure genomic DNA alterations
 - Insertions, deletions, copy number variations
- TaqMan qPCR
 - Predesigned assays
 - Quantitative gene expression
 - Nucleic acid quantitation

Genotyping

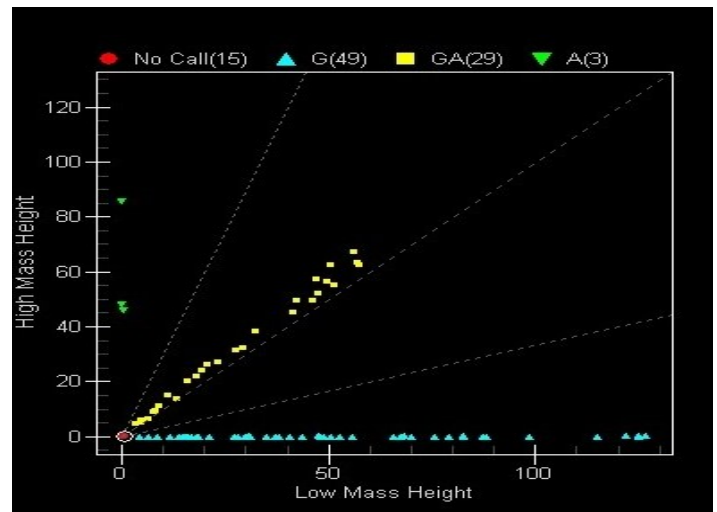
- Assay Design Services
- Data Analysis
- Sequenom iPLEX / MassARRAY
- Mass spec-based technology

Next Gen Sequencing

Genomics Sequencing	Whole genome sequencing
	Whole exome sequencing
	Targeted region sequencing
	Genotyping by sequencing
Transcriptomics	Small RNA sequencing
	LncRNA sequencing
	Degradome sequencing
	transcriptome sequencing
Epigenomics	Whole genome Bisulphate sequencing
	Me DIP sequencing
	ChIP sequencing
Microbial Genomics	Microbial whole genome sequencing
	Metagenomic shotgun sequencing
	Metatranscriptome sequencing
	16s/18s/ITS amplicon sequencing



Gene expression analysis



Scatter Plot from MassArray

REPROCELL provides a broad portfolio of Next Generation Sequencing (NGS) services, drawing on 25 years of experience in sequencing technologies, and supported by a bioinformatics team dedicated to helping you interpret your results

- Whole Genome
- Methylome
- Bisulfite Seq
- Transcriptome
- Targeted Panels
- ChIP Seq
- Exome
- miRNA Seq
- Metagenome
- Small RNA
- mtDNA Seq
- Metatranscriptome
- lncRNA
- Degradome
- Microbiome

For research use only. Not for use in diagnostic or therapeutic procedures. Company names, company logos and trademarks for REPROCELL, BioServe, Stemgent, Reinnervate, and Bioptra are all the property of REPROCELL Inc. © 2019 REPROCELL, Inc. All rights reserved.