

Target-based drug activity and post-translational and transcriptional analysis using *ex vivo* Alvetex Scaffold three-dimensional cell culture technology

Anne-Lise Peille^[1], Susanne Braum^[2], Richard Rowling^[3],
Torsten Gieseemann^[1], Vincent Vuaroqueaux^[1], Heiner
Fiebig^[1], Stefan Przyborski^[3], Sumeer Dhar^[1]



Introduction

Oncotest maintains a unique repository of > 300 tumor xenograft models representing all major tumor histotypes (non-small cell lung cancer/NSCLC, pancreatic, prostate, colon, gastric, breast, ovarian and renal cancers, melanomas and sarcomas) as well as niche tumors (pleura-mesothelioma, bladder, and head and neck cancers). After evaluating many 3D cell culture platforms, Oncotest has chosen Alvetex Scaffold 96-well plates because of their simplicity, low cost of adoption and flexibility to study tumour cell cytotoxicity as well as mechanism of drug action at the translational and post-transcriptional levels.

Aims

The aims of this study were:

- Validation of the 3D tumour cell culture assay in Alvetex Scaffold to study the cell viability of tumor cells treated with targeted drugs.
- Comparison of the results obtained using the 3D cell culture assay in Alvetex Scaffold 96-well plates with TCA (soft agar) assay
- Demonstration of the possibilities for further analyses, such as Western blot, qRT-PCR and sequencing.

Materials and methods

Soft agar clonogenic assay

Xenografts growing s.c. in NMRI nu/nu mice were removed, mechanically disaggregated and treated with an enzyme cocktail to obtain a cell suspension. The percentage of viable cells was determined by trypan blue exclusion.

The clonogenic assay was performed according to the method described by Hamburger and Salmon. The test compounds were applied by continuous exposure in culture medium 24 h after seeding, using the three-fold concentrated stock solutions.

The assay was performed in triplicate at six concentrations, and incubated for 7 to 20 days. Colonies were counted with an image analysis system (OMNICON 3600, BioLogics, Inc. or Bioreader® 5000 Pro-W, Biosys GmbH) after staining with 2-(4-iodophenyl)-3-(4-nitrophenyl)-5-phenyltetrazolium chloride.

3D cell-based assay using 96-well Alvetex plates

Alvetex® Scaffold is an inert, highly porous polystyrene scaffold for the 3D culture of cells. It allows cells to be cultured in a way that better mimics *in vivo* cell growth,

[1] Oncotest GmbH, 12 Am Flughafen, DE-79108, Freiburg, Germany; [2] Tecan, Seestrasse 103, 8708 Maennedorf, Switzerland;

[3] REPROCELL Europe Ltd (formerly Reinnervate), NETPark Incubator, Thomas Wright Way, Sedgefield, Co Durham, TS21 3FD, United Kingdom.

Application Note

offering improved cell viability and more physiologically relevant responses to drugs and other external stimuli. The Alvetex Scaffold 96-well plates were prepared and hydrated according to the instructions provided by REPROCELL. To enable direct comparison of the data obtained from the soft agar assay and Alvetex Scaffold plates, all conditions (seeding density, incubation time and compound treatment) were identical.

Drug and compound dispensing, and measurement of cell viability

The plates are incubated overnight at 7.5 % CO₂ and 37 °C. Drug and compound preparation was performed using the Freedom EVO 200 automated platform. For the subsequent addition of compounds to each plate the MultiChannel Arm™ (MCA 96) was employed.

The plates were incubated for 8 or 13 days before being processed for the endpoint assay measurement. No medium change was performed during the incubation. At the end of the incubation cell viability was checked with

CellTiter-Glo® (Promega) and luminescence was measured using a Perkin Elmer EnVision® multimode plate reader.

Obtaining RNA or DNA preparations with a sufficient quality for PCR, qPCR or sequencing is very difficult, if not impossible, with cells cultured in TCA and hydrogels. Alvetex Scaffold in contrast gives a new solution for molecular biology analyses since RNA and DNA extractions are very easy.

Quantitative PCR performed on non small cell lung cancer cells cultured in Alvetex Scaffold plates and treated with cMETi ± EGFRi were extracted and reverse transcribed with the SYBR® Green Cell-to-CT kit (Ambion). The cDNA obtained was used as a matrix to perform qPCR analyses of c-MET, EGFR, 18s and hTBP expression (data not shown). Analyses are also ongoing to demonstrate the possibility of this system being used to study mutations or gene amplifications/deletions.

Results

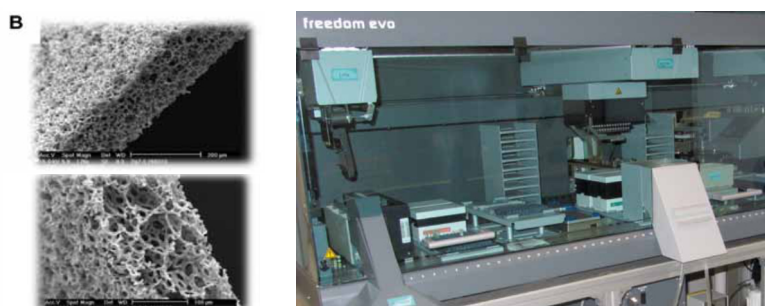
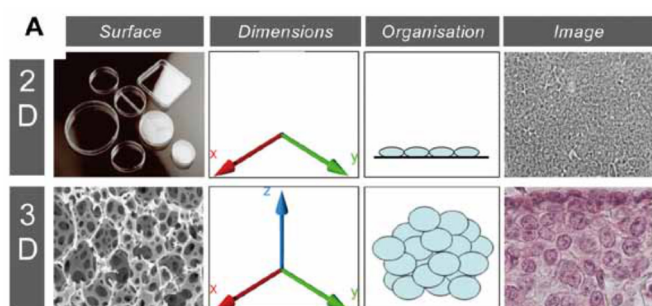


Figure 1. Alvetex Scaffold 3D cell culture technology. **(A.)** The Alvetex Scaffold is a 200 µm thick membrane with >90 % porosity. Cells form *in vivo* like structures in the scaffold. **(B.)** Electron microscope images of the scaffold at different magnifications.

Figure 2. Freedom EVO 200 with 8-channel Liquid Handling Arm, MCA 96 and integrated gripper, cooling carrier, shaker, carousel and incubator (StoreX 110, LiCONiC).

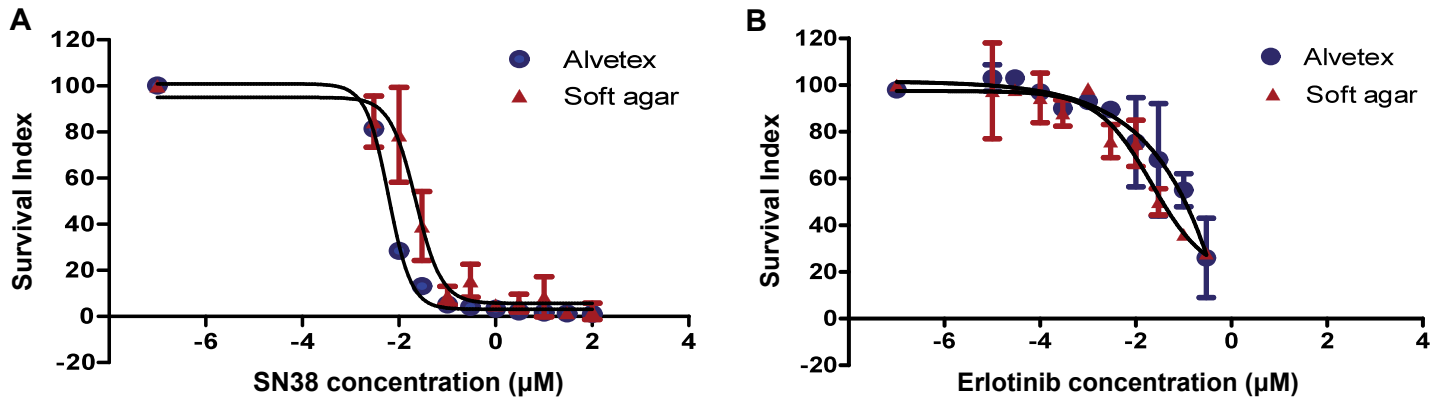


Figure 3. Comparison of Alvetex Scaffold vs soft agar clonogenic assay (TCA) for bladder cancer xenograft suspensions treated with (A.) SN38 (irinotecan) and (B.) erlotinib.

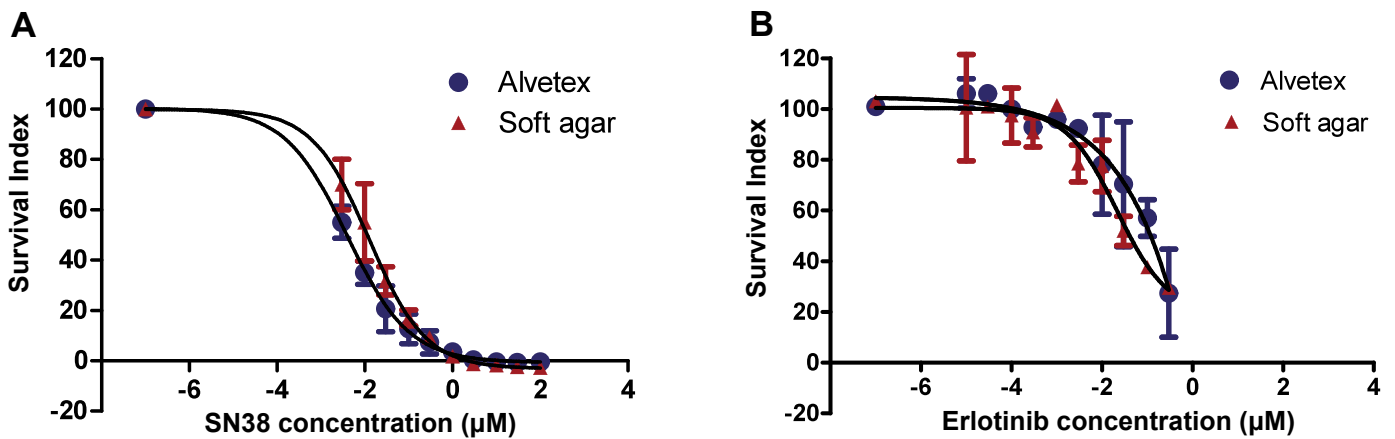


Figure 4. Comparison of Alvetex Scaffold vs soft agar clonogenic assay (TCA) for non-small cell lung cancer xenograft derived cell suspension treated with (A.) SN38 (irinotecan) and (B.) erlotinib.

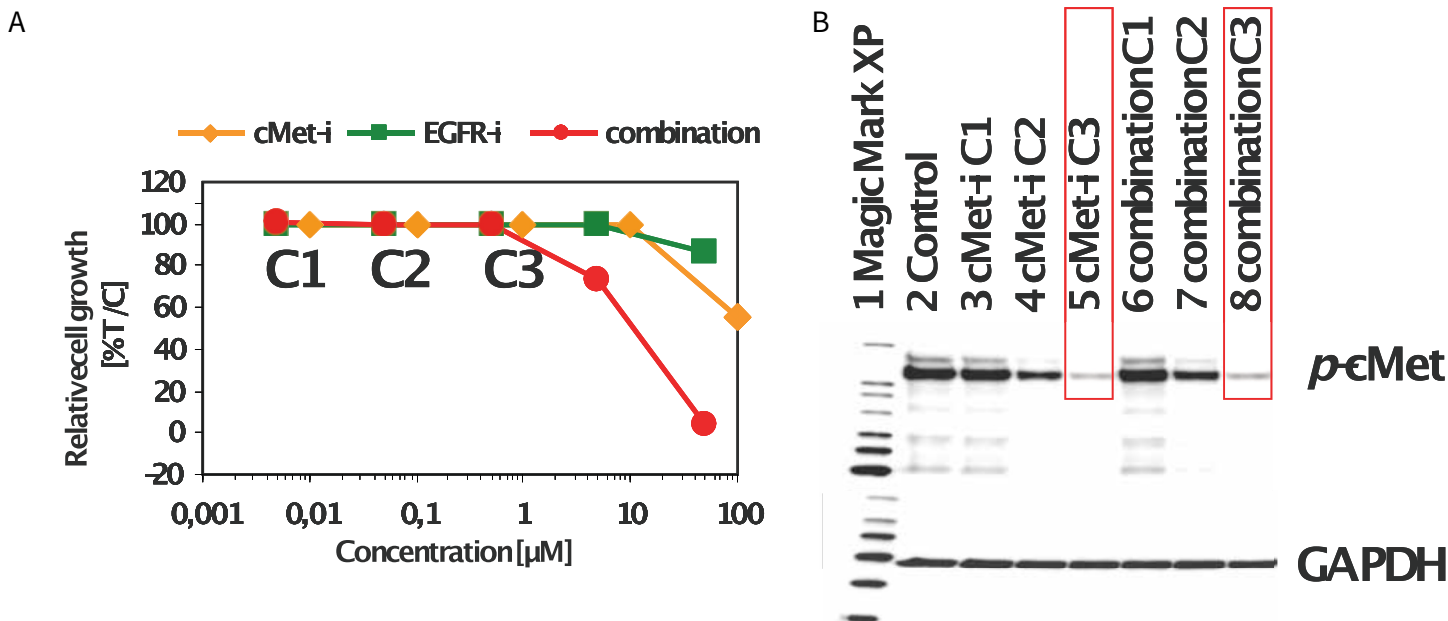


Figure 5. Figure 5: Non-small cell lung cancer xenograft cell suspensions were cultured on Alvetex Scaffold 96-well plates under standard 3D cell culture conditions and exposed to cMETi and EGFRi, alone and in combination. The viability was analyzed with Cell Titer-Glo[®] assay from Promega. The combination of cMETi and EGFRi enhanced the cell loss as compared to the single agent treatment (A.). Whole cell lysates were prepared from the above cells for immunoblotting with phosphorylated c-Met antibody, as well as the GAPDH antibody as a loading control (B.).

Summary and Conclusions

Alvetex[®]Scaffold 96 well plates present a simple and reliable supplement to the clonogenic soft agar (TCA) assay for the screening of novel anti-cancer drugs.

The technology is compatible with common luminescent fluorescence cell health assays reading directly from the plates. In our hands, tumour cells can be cultured for 7-14

days without the need for media changes making the solution very cost effective.

The assay was easily automated on the Tecan Freedom EVO platform. The ability to reliably recover RNA and protein from the drug-treated 3D cells from Alvetex Scaffold offers effective analysis of drug mechanism of action using both protein and gene expression techniques.



Improving human health through biomedical innovation and discovery.



- Extensive biorepository of human tissue samples
- Network of clinical sites for prospective sample collection
- Molecular services



- RNA reprogramming systems and services
- Reagents for pluripotent cell culture and differentiation
- Extensive portfolio of small molecules



- 3D cell culture technology creating *in vivo*-like cell environment
- Protocols for stem cell, oncology and other tissue research applications



- Experts in human tissue research services for drug development
- Predictive safety, efficacy and ADME assays in human and animal tissues