

Bioserve™ Global Biorepository

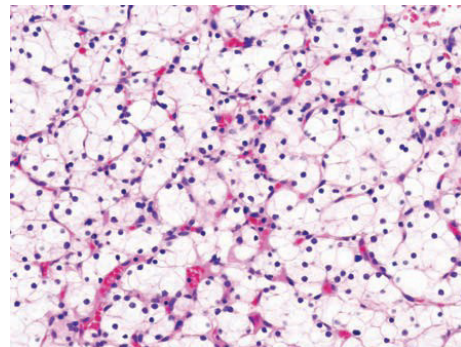
Human Tissue and Blood Bank



Unparalleled access to human biospecimens

REPROCELL's Bioserve Global Repository is the world's largest commercial human tissue bank, providing researchers with access to over 600,000 DNA, RNA, human tissue and serum samples derived from over 120,000 patients collected from four continents.

Bioserve human tissue samples are consistently handled according to validated protocols established by the FDA/NCI guidelines for biomarker research. All samples are fully consented for broad genomic and proteomic use and are ethically collected according to HIPAA regulations and IRB approved protocols.



Renal cell carcinoma



Patient Recruitment

- Patients are recruited under IRB approved protocols and broadly consented for genomic and proteomic research
- Extensive case report forms with specific inclusion exclusion criteria insuring accurate disease state collections
- Ongoing collection of personal physician confirmed normal controls

Sample Handling and Storage

- Tissue is snap frozen to preserve RNA and protein integrity
- Serum kept at -80°C with no freeze/thaw cycles
- Collection sites trained

Clinical Data Management

- All demographic, clinical and pathological data maintained in a readily searchable database
- Sample data are de-identified and de-linked from the original patient consent
- Client defined sample sets based on specific patient information

Summary

- Over 25 years experience in providing researchers world class biomaterials and data
- Customers for biomaterial include many major pharmaceutical and biotech companies
- Rapid turnaround time on banked and prospective samples
- Custom collection design services

Bioserve Global Biorepository Blood Based Collections

Asthma
 Cancer (post-treatment)
 Cancer (pre-treatment)
 Clinically-confirmed Normal
 Controls
 Congestive Heart Failure
 COPD
 Coronary Artery Disease

Diabetes
 End-Stage Renal Disease
 Hypertension
 Lipid Disorder
 Lupus
 Metastatic Cancer
 Multiple Sclerosis
 Neurological Diseases

Obesity
 Osteoarthritis
 Osteoporosis
 Psoriasis
 Rheumatoid Arthritis
 Stroke

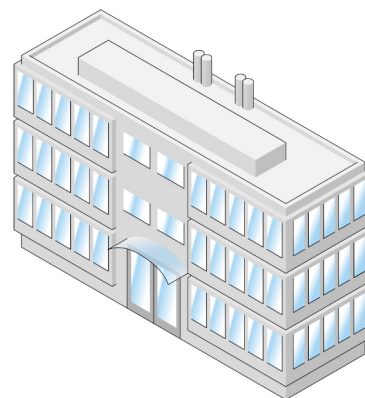
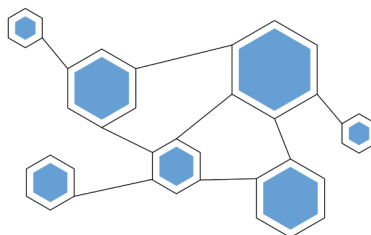
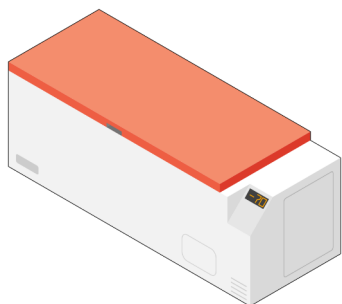
Bioserve Fresh Frozen and FFPE Tissue Types

Adipose
 Adrenal
 Aorta
 Artery
 Bladder
 Blood
 Bone
 Brain
 Breast
 Cartilage
 Cervix
 Colon
 Esophagus
 Fallopian Tube
 Gall Bladder
 Intestine

Kidney
 Larynx
 Lip
 Liver
 Lung
 Lymph Node
 Mouth
 Muscle
 Nerve
 Omentum
 Ovary
 Pancreas
 Parathyroid
 Parotid
 Penis
 Peritoneum

Pharynx
 Pituitary
 Prostate
 Rectum
 Salivary Gland
 Serum
 Skeletal Muscle
 Skin
 Small Intestine
 Smooth Muscle
 Soft Tissue
 Spleen
 Stomach
 Submandibular Gland
 Synovium
 Testis

Thymus
 Thyroid
 Tongue
 Tonsil
 Ureter
 Urethra
 Uterus
 Vagina
 Vein
 Vulva



In-House Samples: The Bioserve Global Biorepository

Our Global Biorepository of human tissue samples is one of the largest commercial human tissue banks in the world. With more than 600,000 human serum, DNA, RNA, and FFPE samples, from over 120,000 patients on four continents, there is a good chance that the human DNA samples you need are already stored in the biorepository.

Bioserve Partner Network

The Bioserve Partner Network is a collaboration of leading academic, medical, and industry biospecimen repositories. By uniting Bioserve's market distribution channels with exceptional samples from Bioserve's Global Biorepository and network member inventories, you are ensured of getting the biosamples you need.

Prospective Sample Collections

Through REPROCELL Bioserve's orphan disease network, rare human tissue samples are finally within reach. Bioserve continues to establish procurement partnerships with specialty clinics around the United States in a number of indications/diseases, including Autoimmune, Inflammatory and Rheumatology, Urology and Oncology.

www.reprocell.com/human-tissue-samples



REPROCELL BRANDS

